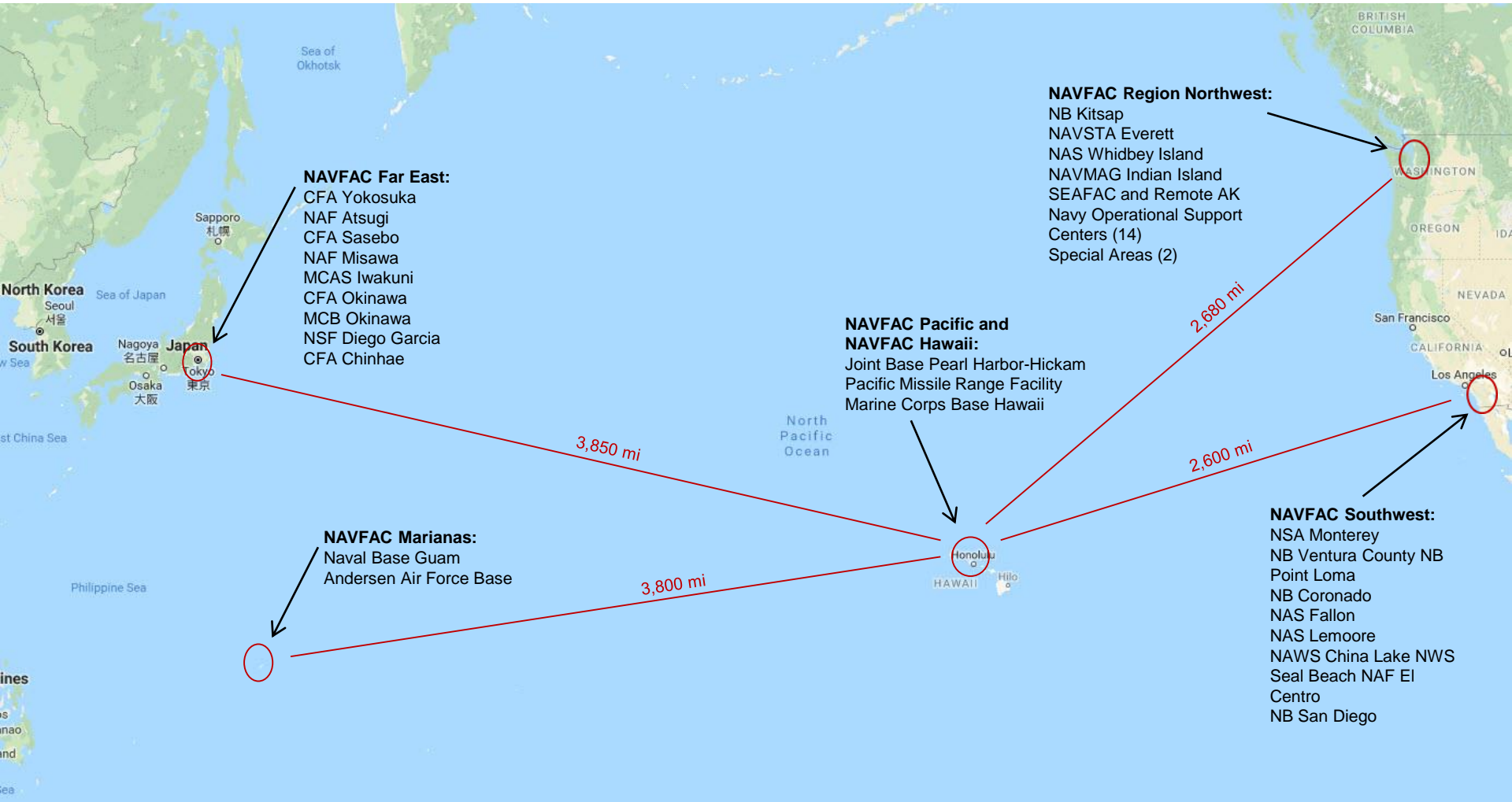




NAVFAC Pacific Natural Resources Program

**Justin Fujimoto
Justin.fujimoto@navy.mil
808.472.1407**

NAVFAC Pacific Area of Responsibility



NAVFAC Pacific Environmental Planning and Conservation (EV2)



Name	Email	Phone
PAC EV2 Program Lead: Christine Wallace	christine.wallace@navy.mil	808.472.1447
Terrestrial Natural Resources (EV22): Frans Juola	frans.juola@navy.mil	808.472.1433
Marine Resources (EV24): Andrea Von Burg Hall	andrea.vonburg-hall@navy.mil	808.472.1425
Cultural Resources (EV23): Karen Desilets	karen.desilets@navy.mil	808.472.1445
NEPA Planning (EV21): Julie Zimmerman (acting)	julie.zimmerman@navy.mil	808.472.1407

NAVFAC Pacific

Terrestrial Natural Resources and Applied Biology Staff



Name	Email	Phone
Frans Juola, Ph.D. Supervisor	frans.juola@navy.mil	808.472.1433
Angela Kieran-Vast	angela.kieranvast@navy.mil	808.472.1406
Norma Creps	norma.creps@navy.mil	808.472.1408
Justin Fujimoto	justin.fujimoto@navy.mil	808.472.1407
Coralie Cobb	coralie.cobb@navy.mil	720.542.3085
Kristine Barker	Kristine.barker@navy.mil	808.472.1384
Lorraine Shaughnessy, M.S.	Lorraine.Shaughnessy@navy.mil	808.472.1475
Applied Biology Program		
Bill Kanour, Ph.D.	bill.kanour@navy.mil	808.472.1415
Makena Mason, M.S.	makena.mason@navy.mil	808.472.1416
Mike Medina, MSPH	michael.j.medina6@navy.mil	619.532.1157

NAVFAC Pacific Marine Resources Staff



Name	Email	Phone
Andrea Von Burg Hall, M.S. Supervisor	andrea.vonburg-hall@navy.mil	(808) 472-1425
Michelle Bejder, Ph.D.	michelle.bejder@navy.mil	(808) 472-1413
Angela Bostwick, M.S.	angela.bostwick@navy.mil	(808) 472-1426
Jessica Chen, Ph.D.	jessica.chen@navy.mil	(808) 472-1424
Kevin Lino	kevin.lino@navy.mil	(808) 472-1087
Rebecca Springer, M.S.	rebecca.a.springer@navy.mil	(808) 472-1444
Sean Hanser, Ph.D.	sean.hanser@navy.mil	(808) 472-1388

ESA Section 7 Consultations:

- Commonwealth of the Northern Mariana Islands (CNMI) Joint Military Training (CJMT) (PACOM/MARFORPAC)
- Munitions Storage Igloos (Andersen AFB - lead) – BA in addition to consultation

Biological Opinion Implementation:

- Marine Corps Relocation to Guam - Joint Guam Program Office (JGPO)

INRMPs: Writing, Reviewing, Implementing:

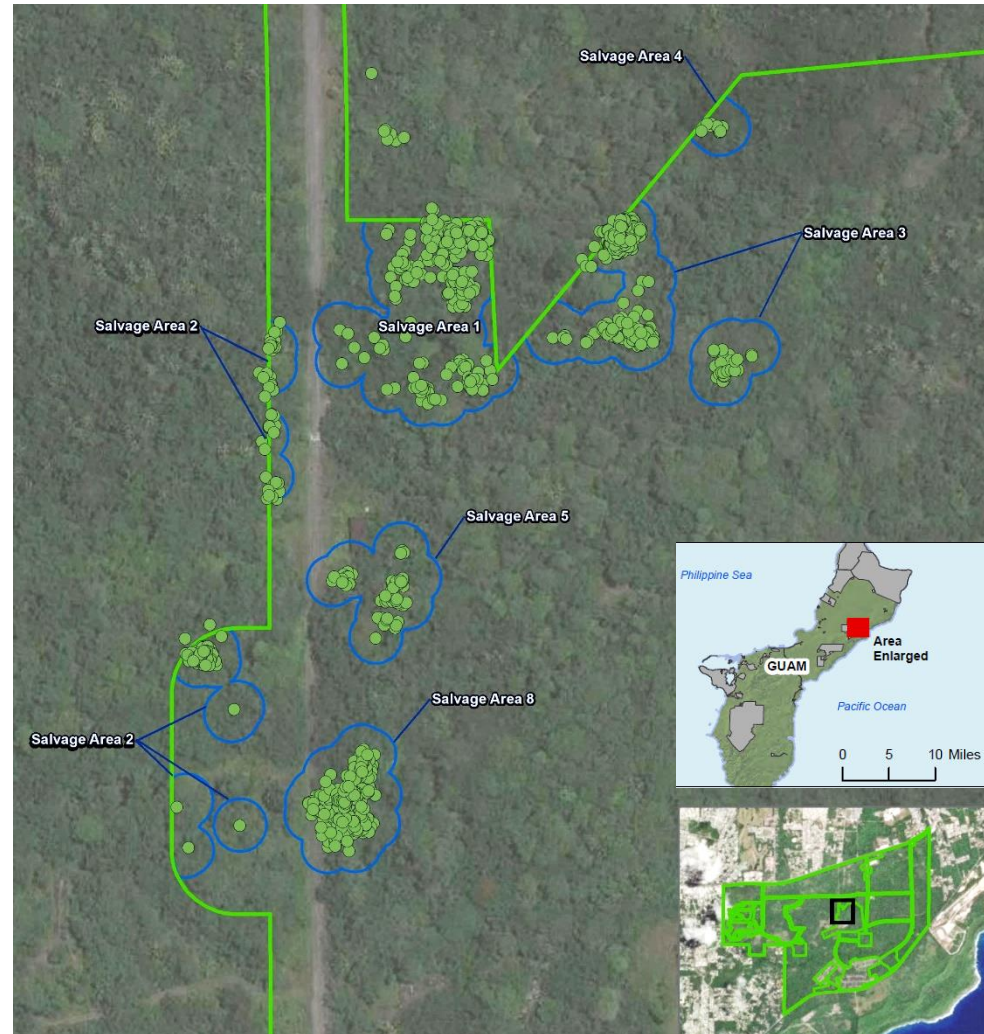
- Joint Base Pearl Harbor-Hickam - Restoration of Ahua Reef Wetland
- Marine Corps Base Hawaii - Fire Management Plan, Vegetation Mapping and Endangered Waterbird Monitoring
- Pacific Missile Range Facility - Ungulate Fencing at Makaha Ridge



Marine Corps Relocation to Guam

Translocation of endemic Guam tree snails (*Partula radiolata*)

- ESA-listed as endangered on October 1, 2015 (80 FR 59423)
- BO specifies translocation from project footprints.
- ~200 snails expected
- >3,800 snails found and translocated



Translocation of endemic Guam tree snails (*Partula radiolata*) Cont'd



Successes

- >98% of translocated snails dispersed from release cup
- Est. 85% survival after 3 months

Partners

- Marine Corps Activity Guam
- HDR
- USFWS

High Number of Terrestrial ESA-Listed Species

- Joint Base Pearl Harbor Hickam (JBPHH) – 35
- Pacific Missile Range Facility (PMRF) – 17
- Naval Base Guam / Andersen AF Base – 19
- Cwlt. Northern Mariana Islands (CNMI) – 27

Complex Projects

- Marine Corps Relocation to Guam
- CNMI Joint Military Training (CJMT)

Avoiding, minimizing, and offsetting impacts to coral reefs

- Difficult to negotiate with agencies
- Necessary for in-water permits from Army Corps
- Costly and time consuming/long tail



Photo from HDR EOC

Questions?